

<b>AST</b>	AIRBUS 319/320/321 Sound Config	V .1.0
------------	------------------------------------	--------

## General

This document shows how to config and install sounds in the AST software system.

The sound system is basicly built up in 4 parts. The AST server that holds the sound configuration tool, the external sound service that plays the sound, the AST\_sound.cfg file that holds the configuration information and the WAVS folder that holds the sound files.

The external sound service, AST\_sound.cfg and the WAVS folder are now defined as an (ESS) External Sound System for better understanding. These files are necessary to get a sound to be played on every ESS installation.

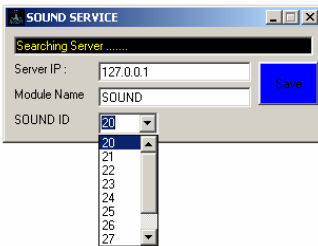
One ESS is installed together with the AST server installation, but there is not really a difference to the standalone ESS installations.

The only difference to an ESS that runs on an other PC is, that it always gets the module number 8 and you can't see the ESS in your task list.

	Only for simulator use	1
--	------------------------	---

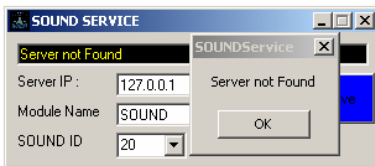
## How to install an ESS

If you install the ESS on another PC will you see it after startup. Then you have to insert a module number between 20 and 29.



Every ESS must have a unique module-id because the AST server can't handle more than one with the same IDs.

As you see, the ESS will search through the net to find the server. Please start the server before the ESS, so that it can find it.



This message will come up if the ESS does not find the server.

If it finds a server, it will minimize to the tasklist.

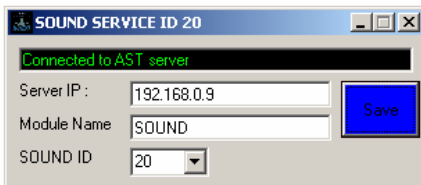
Please activate it again to see the status, it will show a window like this



The Save button is flashing to show you that the settings you see aren't saved yet.

Press it to save the settings.

From now on the ESS connects itself directly to the AST server and doesn't search again through the net.



The Save button becomes blue and the ESS minimizes again.

You can also change the module name if you want, like CALLOUT or Pushback. Just as you want. You see this information in the connect screen of the AST server.

### How to configurate sounds.

The only place to configurate sounds is in the Sound config screen in the AST server. Here can you control all ESS.

Sound	File	V...	Pan	Frq	Sol
NO_SMOKE	WAVS\HCSD...	-1...	0	22000	1
BUZZER	WAVS\A320...	-1...	0	22000	2
PACKS	WAVS\PACK...	-600	0	22000	220
APU	WAVS\apu1...	-1...	0	22000	120
START	WAVS\A320...	0	0	22000	3
WARNING	WAVS\A320...	0	0	22000	6
WARNING_out	WAVS\A320...	0	0	22000	5
CAUTION	WAVS\A320...	0	0	22000	4
KLICK	WAVS\switch...	0	0	22000	10
KLICK2	WAVS\switch...	0	0	22000	11
EXTPWR_PLUGIN	WAVS\HCSD...	-1...	0	22000	14
EXTPWR_PLUGOUT	WAVS\HCSD...	-1...	0	22000	15
CALLOUT400	WAVS\HCSD...	0	0	12000	100
CALLOUT300	WAVS\HCSD...	0	0	12000	100
CALLOUT200	WAVS\HCSD...	0	0	12000	100
CALLOUT100	WAVS\HCSD...	0	0	12000	100
CALLOUT50	WAVS\HCSD...	0	0	12000	100
CALLOUT40	WAVS\HCSD...	0	0	12000	100
CALLOUT30	WAVS\HCSD...	0	0	12000	100
CALLOUT20	WAVS\HCSD...	0	0	12000	100
CALLOUT10	WAVS\HCSD...	0	0	12000	100
CALLOUTRETA	WAVS\HCSD...	0	0	22000	100
MINIMUM	WAVS\HCSD...	0	0	12000	99
DONTSINK	WAVS\HCSD...	0	0	12000	110
PULLUP	WAVS\HCSD...	0	0	12000	110

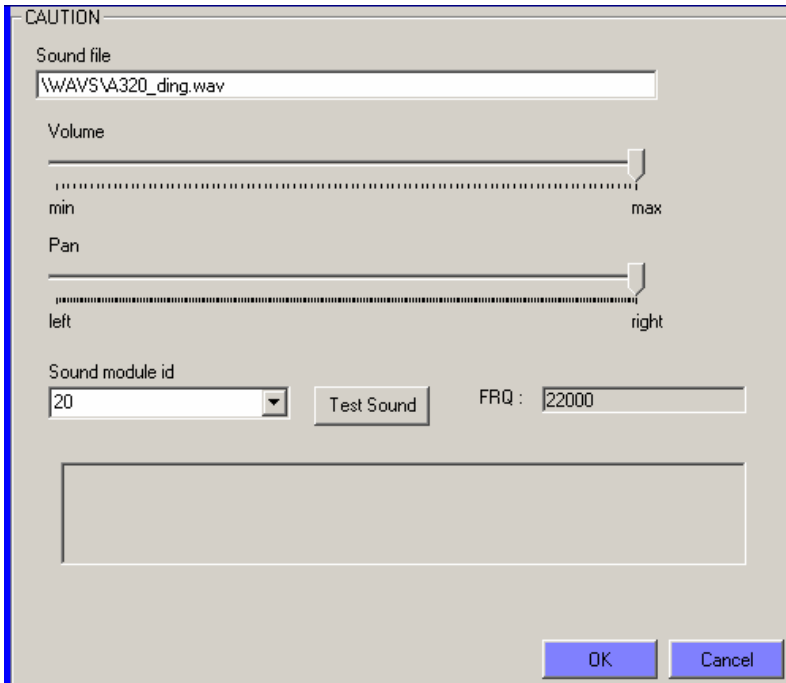
Send setting to sound module

You can see the rows with the sound definitions. If you scrool to the right, you can see the module ID, and this is important, because this tells the system with ESS has to play the sound.

Sound ID	Module ID
1	8
2	8
220	8
120	8
3	8
6	20
5	20

The default setup is defined to ESS ID 8.

You can change that by double click on the sound name. A new screen come up. In the example below you see the caution sound!



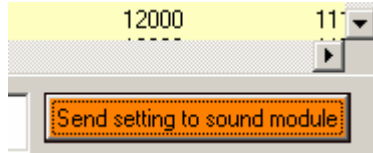
You can select the new sound module id here.

It's important to know if there is a “\_out”-file for the same sound like `WARNING` and `WARNING_out`.

If you only define the `WARNING` sound to another module id, then the sound never goes off again, so the `WARNING` and the `WARNING_out` must be set to the same module id.

Click ok to accept the setting, and the normal sound configuration page is coming up again.

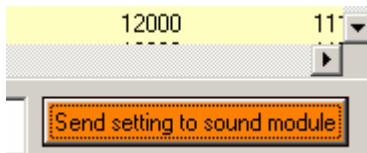
**WARNING! The setting is now active, but not saved!!!**

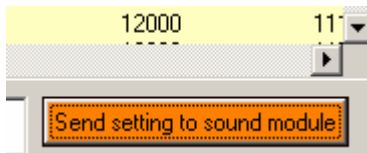


To save the setting you must press the  button on the sound configuration page.

This will save the new setting in the AST server folder and send the configuration to the active ESS modules. If you press this button and the ESS on the other pc's are not running, they will not get the new settings.

The sound will be played by the module-id because the server knows the setting, but volume and pan informations are not the same on the External ESS. More important is it when you update the AST server with a AST\_sound.add file, because then there are more sounds to define in the AST server then the ESS's can play.

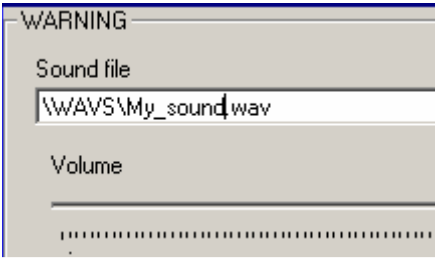


**Please press the  button every time after an AST\_sound.add update.**

If the update contains a new WAV file then you must update all your ESS installation with this.

## How to use other sounds.

If you want to replace our sounds with some else, you can do that too. Copy the sound into the WAVS folder, and rename the sound file in the AST serve sound configuration. Thats it.



Regards AST