

A320 EXPERIENCE AirSimTech	NETWORK Contents	10.00 P 1 REV 1
-------------------------------	----------------------------	--------------------

10.00 CONTENTS

10.10 AST SHAREPATH

- WHAT IS THE AST SHAREPATH?..... 1
- SET-UP YOUR AST SHAREPATH..... 1
- TYPICAL INDICATIONS FOR A "SHAREPATH PROBLEM"..... 2

A320 EXPERIENCE AirSimTech	NETWORK AST SharePath	10.10 P 1 REV 1
-------------------------------	---------------------------------	--------------------

WHAT IS THE AST SHAREPATH

The AST SharePath is a folder located on the computer on which you installed the ASTServer. This directory will be shared by the ASTServer over your whole network. Sharing means that other programs get access to this folder via the network in order to write and read data to / from this folder. Most of the communication between the AST modules is done directly (which means on a direct way from the module to the ASTServer and then to other modules, if required). But some communication is done via files which will be placed in the AST SharePath.

There are some points you have to take care of when setting up the AST SharePath. Those points will be covered in the next chapter

SET-UP YOUR AST SHAREPATH

Requirements:

- TCP/IP Network Protocol has to be installed on all your computers
- File & Printer Sharing has to be installed at least on the server computer
- All computers need to be in the same workgroup
- Do **NOT** place the AST SharePath in the "Documents and Settings"-folder (or a subfolder of it) nor in the "Program Files"-Folder (or a subfolder of it)

Recommendation:

- AST recommends to use static IP-addresses to get a better network performance
- Disable "Allow Indexing Service to index this disk...". You can find this option in the properties of your local disk on which you want to set-up your AST SharePath. The indexing slows down the network file transfer

Set-Up:

After installation of the server your AST SharePath is already set-up. Let's have a look on where to find it:

Example: You installed the ASTServer in the folder C:\AST\Server on a computer with the network-name "MAIN"

During installation of the ASTServer there have been several subfolders created. One of them is named "Data". If you don't do any "SharePath-Change" inside the server this will be automatically your SharePath. In this example your AST SharePath would be: \\MAIN\ASTDATA. This is because the server creates at its first start- up and sharing called ASTDATA. In our example above this sharing would link to C:\AST\Server\Data on the computer MAIN.

In the ASTServer under the point "Services – Options" you are able to change the AST SharePath manually. Be sure to set it to a already existing folder!

Note:

If you install your ASTServer for example in the folder C:\Program Files\AST\Server, then the standard AST SharePath will NOT work because the SharePath is in this case C:\Program Files\AST\Server\Data. As written in the requirements above the SharePath must NOT be a subfolder of "Program Files" or "Documents and Settings".

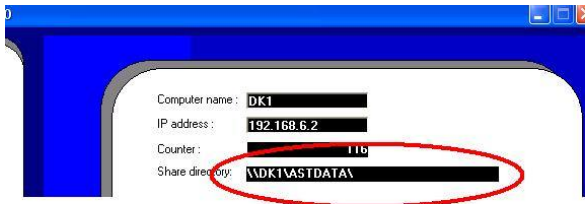
The most easy and secure way to install the server with a automatically working SharePath is to install the ASTServer outside of the "Program Files"- and "Documents and Settings"-folders.

TYPICAL INDICATIONS FOR A “SHAREPATH PROBLEM”

Here a few indications that are a typical result of a not accessible SharePath:

- No display on the MCDU after the start-up of the MCDU and FMGC. Please check in ASTServer under the point “Server - Connections” that the FMGC and MCDU are connected.
- No flightplan display on the NDs.

In those cases try to access the SharePath manually from the computer on which the FMGC is running. To find out your actual SharePath have a look in the ASTServer under the point “Server – Preferences”. There you will see on the right side your actual SharePath (see picture below)



Click on your FMGC-computer the Windows START-button in the lower left corner and then on “Run...” Now enter the SharePath as seen in the ASTServer. If you get access to this folder the network connection seems to be okay on this computer. Do the same for the MCDU-computer (of course only in the case you have the FMGC and MCDU on two different machines) and as well on the ND-computer. If everything is okay so far, then you have to contact AST support.