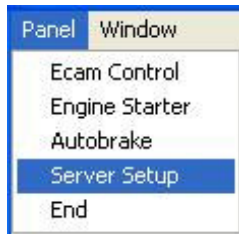


## Configure your Remote Control Panel programm



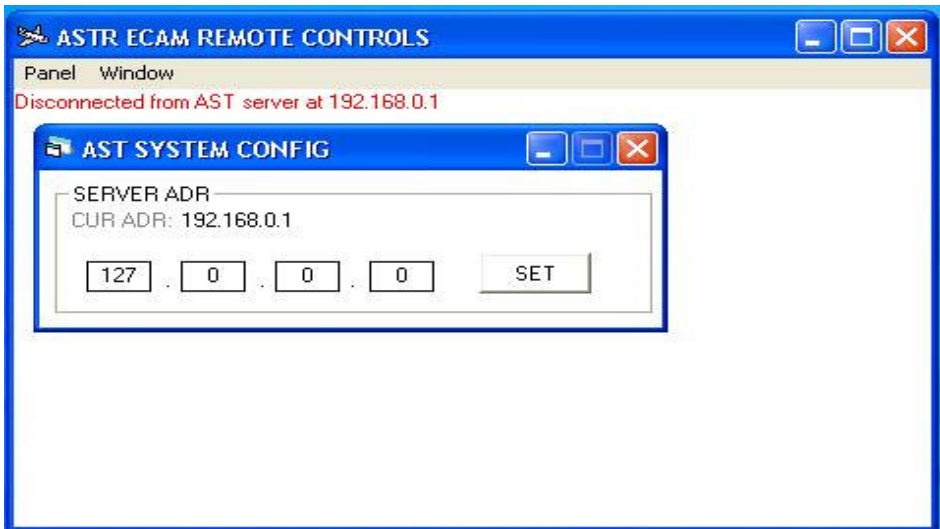
There are important things to setup before you can use this software.

First off all the RCP program needs to know the AST Server IP address. Please go to the panel menu and click on the "Server Setup" to get into the configuration form.



You can see in the lower part of this form the current IP address from the RCP.ini file. To change the IP address please enter the new address into the text boxes and press the SET button. The new IP address is stored in the ini file.

Now restart the program. The connection to the AST server should be established. The connection status appears inside the main window.



### *MOVING and SIZING the WINDOW*



This is the main window with all three panels

This is a self explaining software. Please use the mouse to control the buttons and switches. If you drag over the buttons and switches the mouse pointer changes to a “hand” symbol. You can move the three panels inside the main window. All positions are stored.

You can use the “WINDOW” menu as well to reorder the windows like “cascade, overlapped, site by site”. The “Restore Default” option set the window position for all panel windows to the very first beginning position.



You can control the On/Off command and the brightness of the EWD and SD as well Easily drag over the knob and in the lower part of this knob an **OFF** and **ON** or **BRT+** and **BRT-** appears in red color.

You can activate this corresponding function by clicking on this label like on the pictures below.



Please refer to [www.airsimtech.com](http://www.airsimtech.com) for further information's.